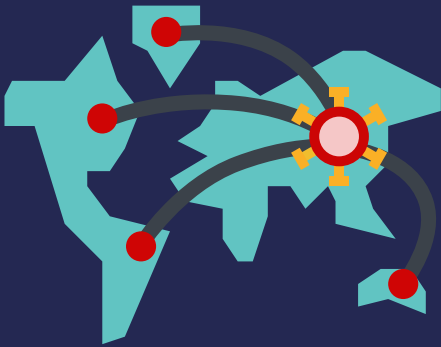
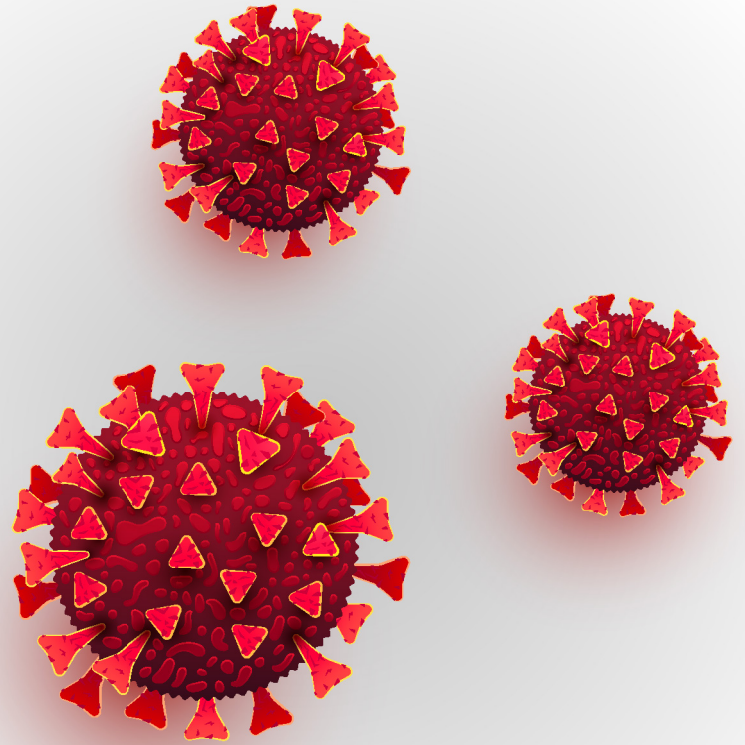


COVID-19

CORONAVIRUS



INFORMATION GUIDE

10.06.2020



LEADING OUR CLIENTS TO
COMPLETE COMPLIANCE

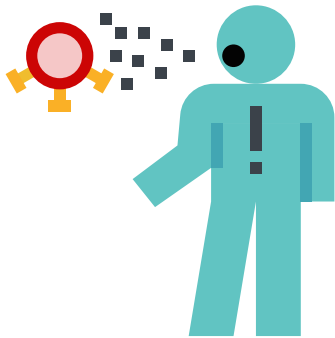
COVID-19 INFORMATION GUIDE

Do



WASH YOUR HANDS WITH SOAP AND WATER OFTEN - DO THIS FOR AT LEAST 20 SECONDS

PUT USED TISSUES IN THE BIN IMMEDIATELY AND WASH YOUR HANDS AFTERWARDS

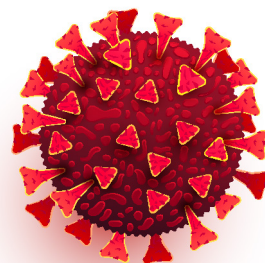
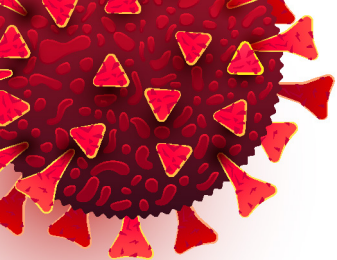


COVER YOUR MOUTH AND NOSE WITH A TISSUE OR YOUR SLEEVE (NOT YOUR HANDS) WHEN YOU COUGH OR SNEEZE

CLEAN & DISINFECT FREQUENTLY TOUCHED OBJECTS AND SURFACES

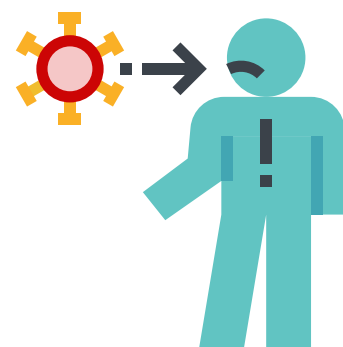


STAY AT HOME UNLESS ESSENTIAL



DON'T

DON'T TOUCH YOUR EYES, NOSE OR MOUTH IF YOUR HANDS ARE NOT CLEAN



DON'T TRAVEL IF YOU HAVE A FEVER AND COUGH

DON'T GO TO A GP, PHARMACY OR HOSPITAL IF YOU HAVE SYMPTOMS. CONTACT 111



WEAR FACE MASKS WHERE APPROPRIATE, SUCH AS WHEN SOCIAL DISTANCING ISN'T POSSIBLE

DON'T MEET OTHERS. IF YOU HAVE TO, STAY 2 METRES (6FT) AWAY FROM OTHER PEOPLE AT ALL TIMES



GET IN TOUCH



Headquarters

Aqua House | Europa Way
Britannia Enterprise Park
Lichfield | WS14 9TZ

NI Office

Willowbank Business Park
Willowbank Road | Larne
Co. Antrim | BT40 2SF



+44 (0) 1543 261 000

+44 (0) 2828 163 100



enquiries@watermanenvironmental.co.uk

info@watermancomplianceservices.com



www.watermanenvironmentalgroup.co.uk

www.watermancomplianceservices.com